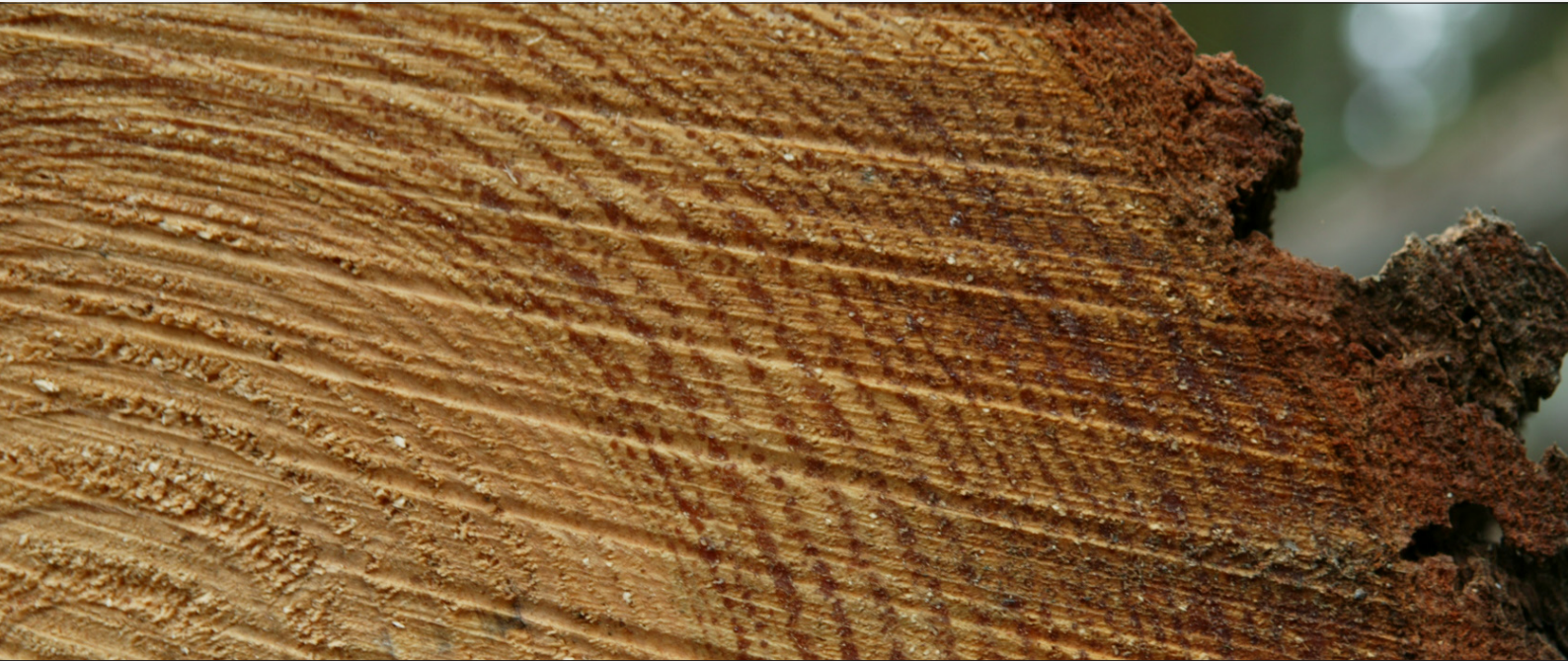


Wood, quality.



Wood is naturally warm and beautiful.

Stunning and versatile furniture can be made from wood.

Wood is used extensively in the floors and furniture of the ForestrySA Head Office.

The reception counter and meeting room tables in the ForestrySA Head Office use hardwood timber harvested from plantations in Bundaleer and Wirrabara.

Spotted gum with its distinctive grain and colour was machined in Mount Gambier to be used as flooring in the Reception and Work Café areas.

Wooden furniture has less impact on the environment, requires less energy in its production and produces less waste when compared to materials such as aluminium, concrete, steel and plastic.

The magnificence of wood is also recognised by ForestrySA through the ForestrySA Wood Sculpture Competition hosted by the Riddoch Gallery in Mount Gambier.

The ForestrySA Wood Sculpture Competition promotes the South Australian timber industry and showcases the wonderful qualities of wood.

Wood, quality.

